

FAST MOVING TECHNOLOGY

STÄUBLI

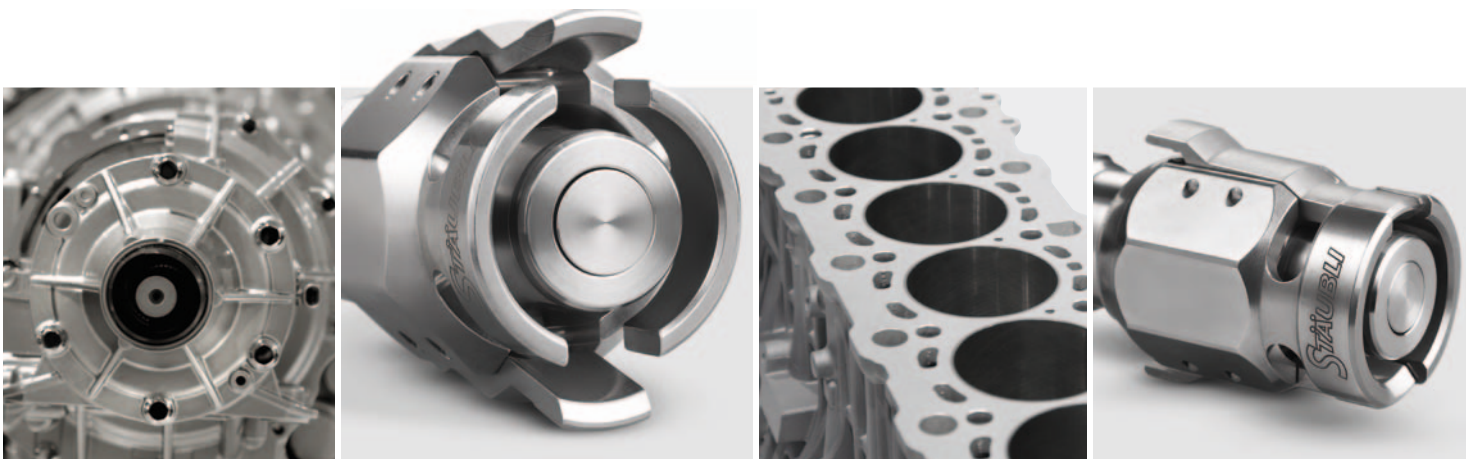
HTI quick-release couplings

Temperature control | High temperature



High temperature
technology...



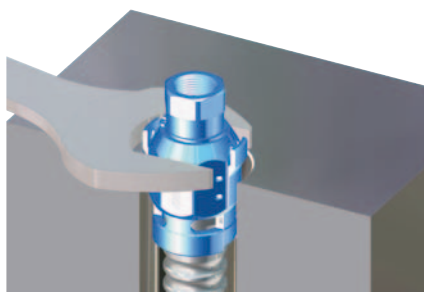


... for safe control

Easy to install

The tool attachment plug lets you install couplings in places that are difficult to access, as a spanner wrench can be used on the body.

In addition, a DIN 7603 compliant copper seal* will provide perfect tightness between the coupling and your interface.



* Seal not supplied

Quick maintenance

The design of the HTI without any seal in the fluid stream means that it does not require any specific maintenance.

The single seal can be replaced in just a few seconds, as often as necessary and without disassembly, guaranteeing continuous tightness at lower cost.

Designed to withstand high temperatures

The internal design of the HTI coupling, with its double shutoff technology with no internal seal and metal/metal tightness, enables it to resist high temperatures up to 300 degrees.

Safe, robust double-action locking

The coupling is first locked by bayonet, using a quick, simple push/turn action, enabling you to check visually that it is locked, even under severe clogging conditions.

Then two safety levers fasten the bayonet for optimum safety.

This totally reliable technology provides excellent resistance to vibration and pollution.

Easy to use

The special design of the HTI ensures it is comfortable to handle and grip for easy coupling.



US 9 863 566
and other countries

Applications

- Temperature control fluids
- Temperature control of moulds on injection presses in the plastics industry
- Temperature control in metallurgical (die casting, iron and steel), glass, composites, aluminium and magnesium pressure die casting, and other industries

Technical characteristics



	HTI 09	HTI 12	HTI 16	HTI 25
Nominal diameter DN (mm)	9	12	16	25
Maximum allowable pressure PS (bar)	12	12	12	12
Minimum and maximum allowable temperatures TS * (°C) when coupled	0 to 300	0 to 300	0 to 300	0 to 300
Shut-off	double			

Tightness

- Fluorocarbon (FPM) seal: **JV**
- Perfluorocarbon (FFKM) seal: **JK**

Construction

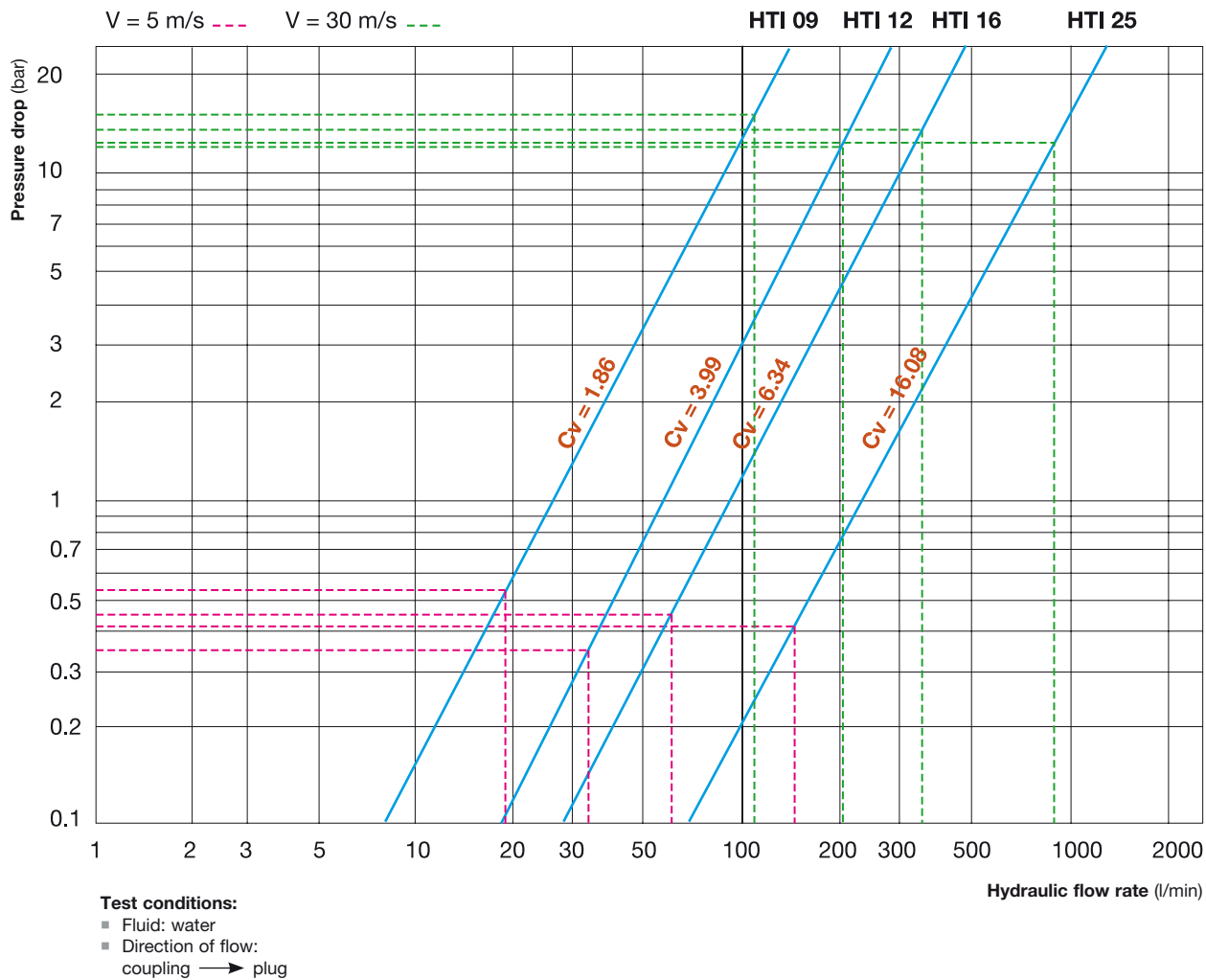
Predominantly stainless steel

Minimum and maximum allowable temperatures TS

0 to 300 °C* depending on the fluid.

* Seal to be replaced as often as required based on your operating conditions.

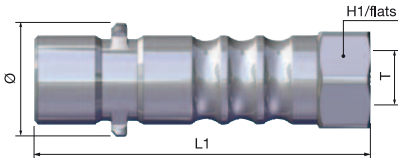
Flow rate / pressure drop hydraulic charts



Part-numbers

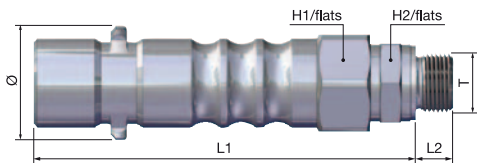
Couplings

Designation	Model	Thread T	Dimensions (mm)				Part-number	
			Ø	L1	L2	H1/flats		H2/flats
1. Coupling with female thread	HTI 09	G 3/8	32	94		27		HTI 09.1102/IA
		G 1/2	32	94		27		HTI 09.1103/IA
	HTI 12	G 1/2	38	108		32		HTI 12.1103/IA
		G 3/4	38	108		32		HTI 12.1104/IA
	HTI 16	G 3/4	48	135		41		HTI 16.1104/IA
HTI 25	G 1 1/4	73	180		60		HTI 25.1106/IA	



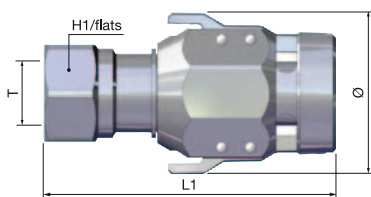
2. Coupling with male thread

HTI 09	G 3/8	32	106.5	12	27	22	HTI 09.1152/IA
	G 1/2	32	108.5	14	27	27	HTI 09.1153/IA
HTI 12	G 1/2	38	122.5	14	32	27	HTI 12.1153/IA
	G 3/4	38	125	16	32	32	HTI 12.1154/IA
HTI 16	G 3/4	48	152	16	41	32	HTI 16.1154/IA
HTI 25	G 1 1/4	73	200	20	60	50	HTI 25.1156/IA



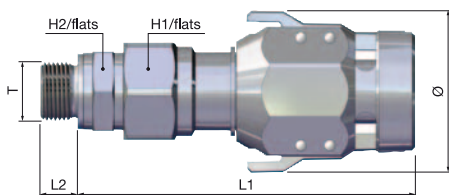
Plugs

Designation	Model	Thread T	Dimensions (mm)				Part-number	
			Ø	L1	L2	H1/flats		H2/flats
1. Plug with female thread	HTI 09	G 3/8	45	82		27		HTI 09.7102/IA/JV*
		G 1/2	45	82		27		HTI 09.7103/IA/JV*
	HTI 12	G 1/2	51	95		32		HTI 12.7103/IA/JV*
		G 3/4	51	95		32		HTI 12.7104/IA/JV*
	HTI 16	G 3/4	65	116		41		HTI 16.7104/IA/JV*
HTI 25	G 1 1/4	90	157		60		HTI 25.7106/IA/JV*	



2. Plug with male thread

HTI 09	G 3/8	45	94.5	12	27	22	HTI 09.7152/IA/JV*
	G 1/2	45	96.5	14	27	27	HTI 09.7153/IA/JV*
HTI 12	G 1/2	51	109.5	14	32	27	HTI 12.7153/IA/JV*
	G 3/4	51	112	16	32	32	HTI 12.7154/IA/JV*
HTI 16	G 3/4	65	133	16	41	32	HTI 16.7154/IA/JV*
HTI 25	G 1 1/4	90	177	20	60	50	HTI 25.7156/IA/JV*




* Fluorocarbon seal (JV) standard. Perfluoroelastomer seal (JK) also available: replace JV code with JK at the end of the part-numbers of the plugs.

Part-numbers

Accessories

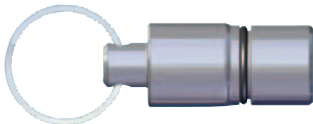
Seal extraction tool

	Part-number
	S00624913

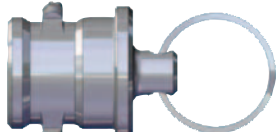
Set of replacement seals

Model	Type of seal	Quantity	Part-number
HTI 09	JV	1	HTI 09.9702/JV
		10	HTI 09.9702/JV/Q10
		50	HTI 09.9702/JV/Q50
	JK	1	HTI 09.9702/JK
		10	HTI 09.9702/JK/Q10
		50	HTI 09.9702/JK/Q50
HTI 12	JV	1	HTI 12.9702/JV
		10	HTI 12.9702/JV/Q10
		50	HTI 12.9702/JV/Q50
	JK	1	HTI 12.9702/JK
		10	HTI 12.9702/JK/Q10
		50	HTI 12.9702/JK/Q50
HTI 16	JV	1	HTI 16.9702/JV
		10	HTI 16.9702/JV/Q10
		50	HTI 16.9702/JV/Q50
	JK	1	HTI 16.9702/JK
		10	HTI 16.9702/JK/Q10
		50	HTI 16.9702/JK/Q50
HTI 25	JV	1	HTI 25.9702/JV
		10	HTI 25.9702/JV/Q10
		50	HTI 25.9702/JV/Q50
	JK	1	HTI 25.9702/JK
		10	HTI 25.9702/JK/Q10
		50	HTI 25.9702/JK/Q50

Cap for coupling

	Model	Part-number
	HTI 09	HTI 09.8500
	HTI 12	HTI 12.8500
	HTI 16	HTI 16.8500
	HTI 25	HTI 25.8500

Cap for plug

	Model	Part-number
	HTI 09	HTI 09.8550
	HTI 12	HTI 12.8550
	HTI 16	HTI 16.8550
	HTI 25	HTI 25.8550



■ Stäubli units ○ Agents

Global presence of the Stäubli Group

www.staubli.com